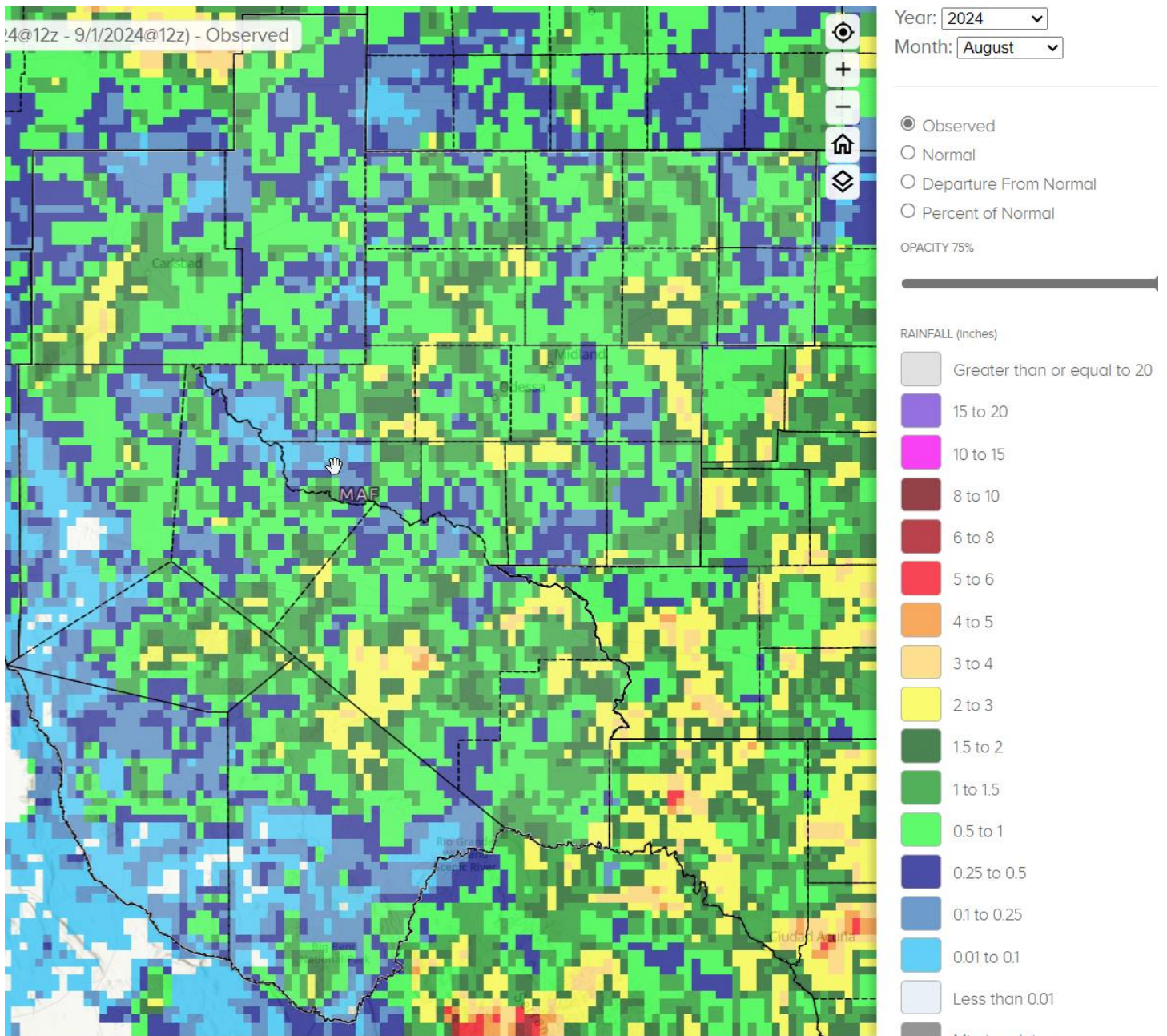


Marfa	KMRF	M	0.10"
Midland Airpark	KMDD	1.62"	1.03"
Pecos County	KPEQ	0.99"	0.21"
Presidio County	KPRS	0.18"	1.57"
Reagan County	KE41	1.17"	2.64"
Snyder	KSNK	0.34"	0.13"

Some other locations in the HSA that received notable amounts of precipitation for August were:

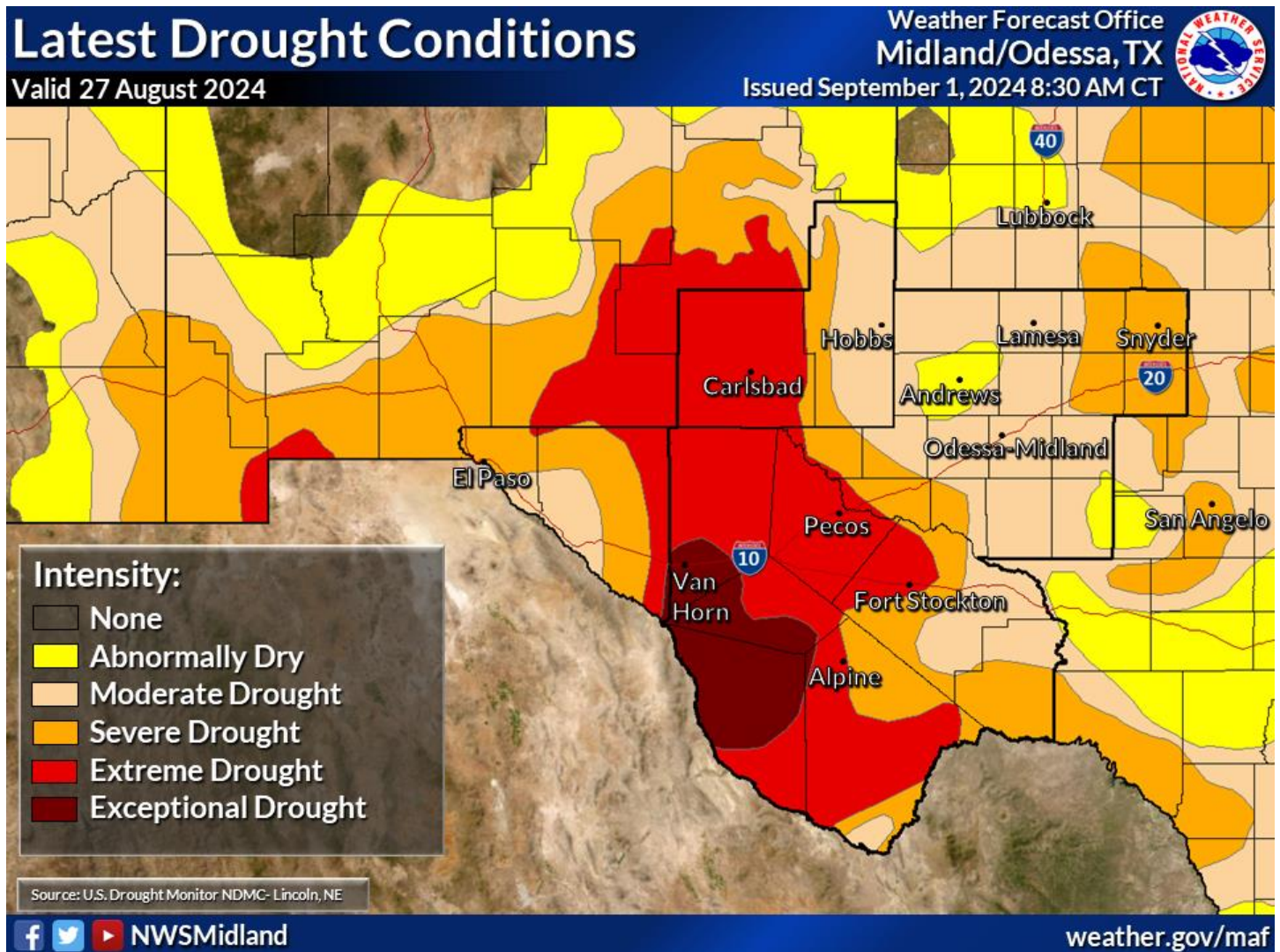
Marfa 13SW, Presidio County	2.60"
Batdraw, Eddy County	2.79"
Carlsbad Caverns National Park, Eddy County	2.99"
Mount Locke, Jeff Davis County	4.13"

84 locations reported rainfall for the month of August, for an HSA average of 0.86".



August Precipitation

Normal August precipitation for Midland International Air and Space Port is 1.72". Total precipitation for the year was 6.12", or 3.21" below normal.



Reservoir levels across the HSA averaged 46.5% of conservation capacity as of September 1st:

Reservoir (County, State)	September 1 Conserv Cap (%)	August 1 Conserv Cap (%)
JB Thomas (Scurry, TX)	16.5	18.0
Colorado City (Mitchell, TX)	39.7	42.2
Champion Creek (Mitchell, TX)	51.7	53.7
Natural Dam Salt Lake (Howard, TX)	48.4	48.5
Moss Creek (Howard, TX)	76.0	79.0
Brantley (Eddy, NM)	45.0	33.0
Avalon (Eddy, NM)	57.0	56.0
Red Bluff (Reeves, TX)	37.5	38.9

Non-Routine Products Issued for August:

Flash Flood Watches (FFA): 0

Flash Flood Warnings (FFW): 2

Flash Flood Statements (FFS): 1

Flood Advisories/Statements (FLS): 0

Flood Warnings (FLW): 0

Total Non-Routine Products Issued: 3

**cc: email: COE ABQ, HIC, IBWC ELP, IBWC PRD, LCRA, NWS ABQ, NWS EPZ, NWS LBB,
NWS MAF, NWS SJT, SRH, TAMU, TCEQ, USGS CNM, USGS SJT, WGRFC**